

Water Quality

Clean water is essential for human health and for the health of fish, shellfish, wildlife, and livestock. Human contact with fecal contaminated waters can cause illnesses such as gastroenteritis, skin rashes and upper respiratory infections.



Keeping Fecal Coliform out of Waterways

Using Manure

- Timing
- Location
- Incorporation

Human Waste

- Inspect and repair septic
- RV and portable toilet use
- Temporary housing

Seasonal Flooding



Managing Nutrients Effectively

Rate

- Tailoring applications to specific crop needs

Timing

- Apply at peak demand of the plant
- Observe and plan according to local weather



Prevent Sediment Pollution

Erosion

- Preventing bank erosion with buffer or filter strips
- Equipment turn-arounds

Runoff

- Utilizing cover or in-row crops
- Follow nutrient recommendations

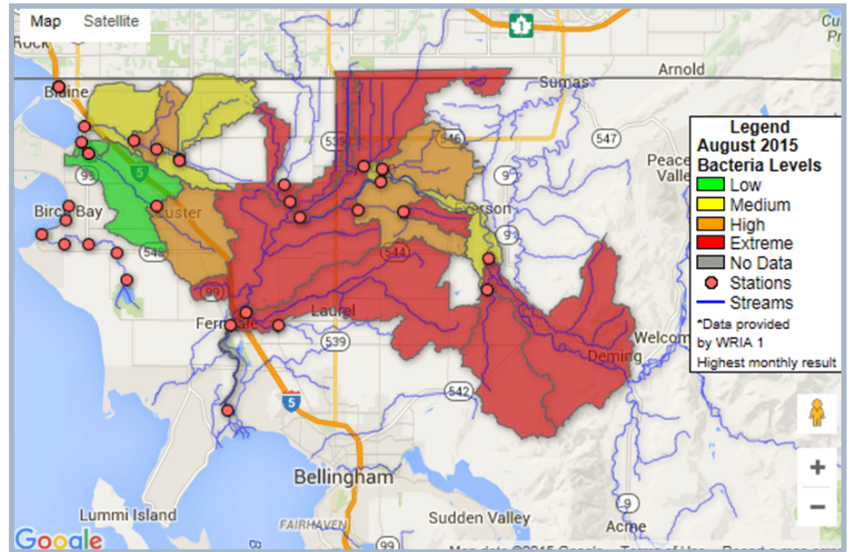


Wetlands act as biofilters, specialized plants and animals remove nutrients and toxins from the water, reduced water speed allows sediments to settle.

Some things to consider in maintaining water quality with efficient and productive berry production

Food production is a crucial part of Washington's economy and a vital component to the success of the region.

- A vibrant and efficient berry industry
- A strong coalition of dairies
- Healthy fishing and shellfish industry



Surface water quality is monitored around Whatcom County. See www.whatcomcd.org/watershed-health-assessment

Fertilizer applications are most effective during periods of peak demand

- Applying more than the recommended amount increases the application cost without increasing yield
- Separated solids are a great mulch material and fertilizer
- Manure integration can decrease compaction and increase organic matter

Manure should be used judiciously and stored with care

- Manure contains pathogens that can be harmful to human health
- Erosion along waterways allows for run-off
- Increased sediment in the water can physically harm fish and fill-in spawning areas
- Nutrients contribute to toxins in the water supply and toxic algae bloom

Contact a Conservation District Resource Specialist for assistance. We can meet you on your farm or at our office.

No Charge. Non Regulatory. Practical Solutions.

(360) 526-2381 • 6975 Hannegan Road, Lynden, WA. 98264 • www.whatcomcd.org